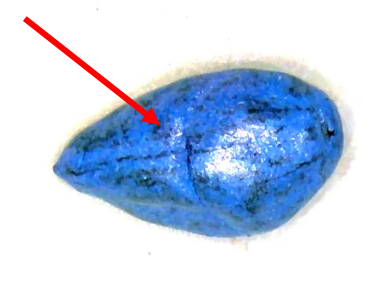
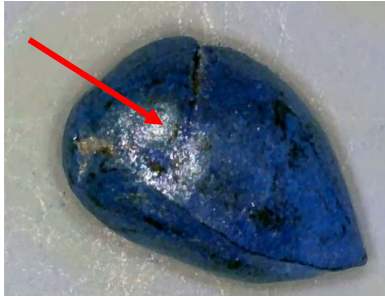




Normal Seed -
Seed that is
without cracks,
divots/indentations, or
pinholes



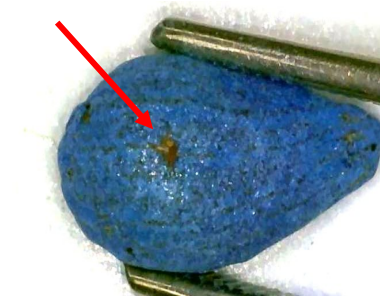
**NC STATE
UNIVERSITY**



Damaged Seed - Seed with minimal
cracks and small divots/indentations in
the seed coat



Very Damaged Seed - Seed with large
cracks and holes leaving the inside of the
seed in view and also abnormal shaped.
If the interior of the seed is visible, it is
very damaged.



Pinhole Seed - Seed with 'pinhole' like
circular damage to the outer coating,
often going to the center.

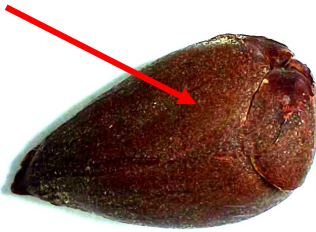
Thank you for the support of this research



NC Cotton Producers Association



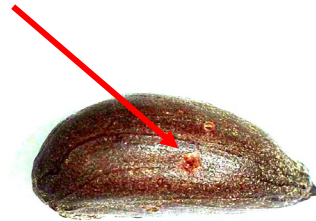
Normal Seed -
Seed that is
without cracks,
divots/indentations, or
pinholes



Damaged Seed - Seed with minimal
cracks and small divots/indentations in
the seed coat



Very Damaged Seed - Seed with large
cracks and holes leaving the inside of the
seed in view and also abnormal shaped.
If the interior of the seed is visible, it is
very damaged.



Pinhole Seed - Seed with 'pinhole' like
circular damage to the outer coating,
often going to the center.

Thank you for the support of this research



NC Cotton Producers Association

Seed to Seedling: Types of Damage



Images from left to right are very damaged, damaged, and pinhole with a truncated root system.

Thank you for the support of this research



Normal



Very Damaged



Damaged



Pinhole